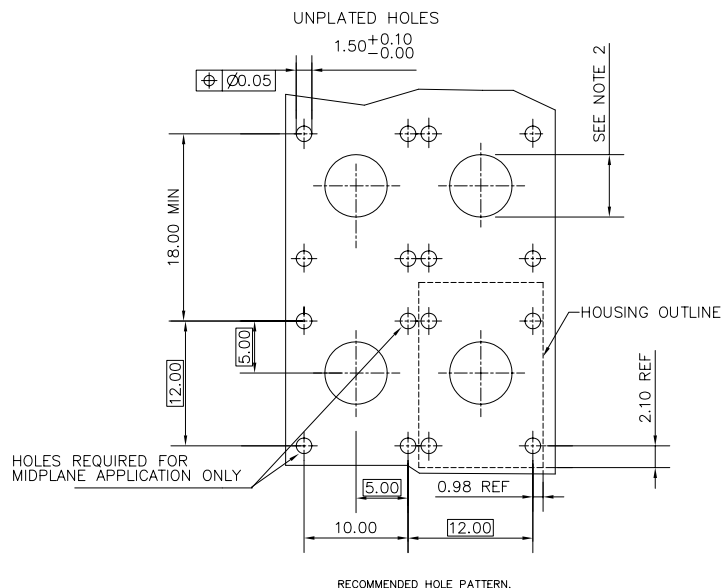
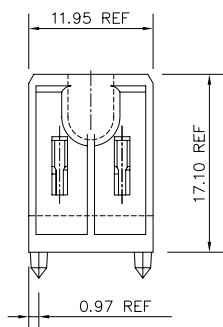
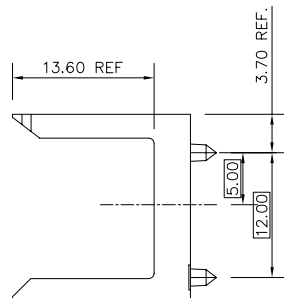
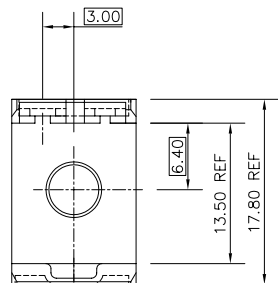


PRODUCT NUMBER  
73475-101

NOTE 5



5. ADD "LF" SUFFIX AT THE END OF PART NUMBER FOR LEAD FREE OPTION

6. THE HOUSING WILL WITHSTAND EXPOSURE TO 260°C PEAK TEMPERATURE FOR 15 SECONDS IN A WAVE SOLDER APPLICATION WITH A 1.5mm MINIMUM THICK CIRCUIT BOARD. SEE APPLICATION NOTES/PROCEDURES IF THEY ARE AVAILABLE.

7. THIS PRODUCT MEETS EUROPEAN UNION DIRECTIVES AND OTHER COUNTRY REGULATION AS DESCRIBED IN GS-22-008.

NOTES

- 1. MATERIAL: LCP, 30% GLASS FILLED, FLAME RETARDANT ACC. TO UL 94-V0  
COLOR: NATURAL
- 2. - WHEN USED WITH GUIDE PIN, HOLE DIAMETER TO BE 3.25±0.10 AND UNPLATED  
- WHEN USED WITH STR. SCREW-TO-BOARD HIGH POWER INSERT, HOLE DIAMETER TO BE 3.25±0.10 AND PLATED WITH 5.00 MIN. PAD DIAMETER.  
- WHEN USED WITH A PLUG/PLUG HIGH POWER COUPLER OR A RECEPTACLE/RECEPTACLE COAX COUPLER, HOLE DIAMETER TO BE 6.00+0.10/-0.00 AND UNPLATED.
- 3. MAX. FLASH 0.1MM
- 4. LEAST MATERIAL CONDITION ACC. TO ANSI Y14.5

mat'l. code		surface		tolerance		projection		product family	
SEE NOTES		ISO 1302 ✓		ISO 406 ISO 1101		MM		METRAL (tm)	
ltr	ecn	no	dr	date	tolerances unless otherwise specified		title		
A	V70831	MDF	5/19/97	angles	linear	.0±.3	HYBRID HEADER HOUSING-12MM		
B	V71431	MDF	10/2/97	0'±2'		.00±.13	scale 1:1		
C	V00024	JWS	1/28/00			.000±.0051	dwg no		
D	M05-0200	MHT	9/21/05	dr	M.FETROW	5/19/97	sheet 1 of 1 size		
E	M06-0277	MHT	7/22/06	engr	C.PENDLETON	5/17/97	73475 A3		
				chr	C.PENDLETON	5/17/97	type Product Customer Drawing		
				appd	C.PENDLETON	5/17/97			
sheet index	revision	E							
	sheet	1							



FCIconnect.com

Copyright FCI